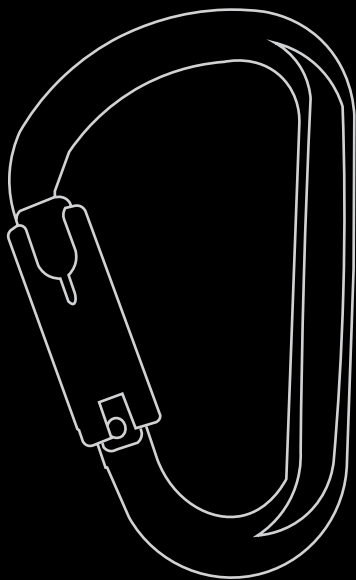


# I|S|C

Solutions in Metal

Connectors

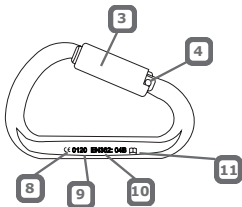
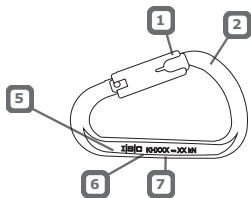


CE 0120

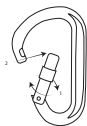


climb. work. rescue.

## A Nomenclature & Markings



## B Gate Mechanisms



Screwgate

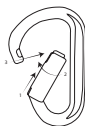
Unscrew, open



Twistlock

(double-action)

Turn, open



Supersafe

(Triple-action)

Lift, turn, open

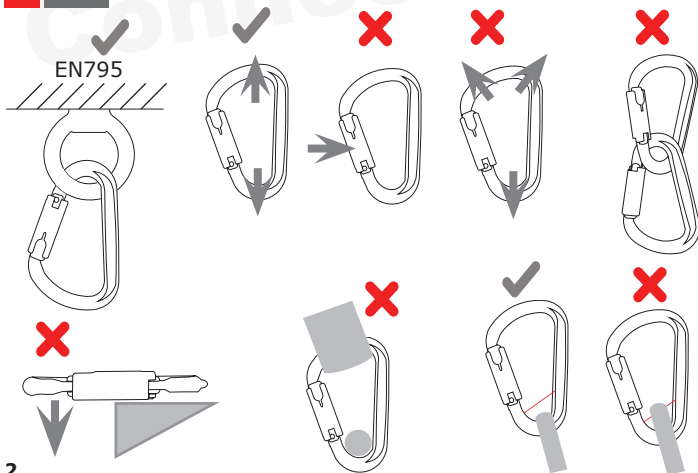


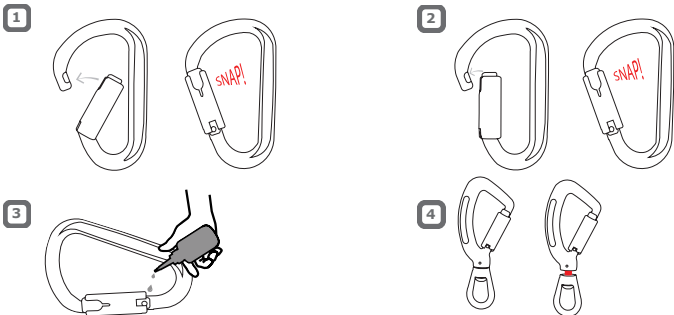
Quadlock

(Quad-action)

Turn, lift, turn, open

## C Use





EN English

### [A] Nomenclature & Markings

1. Gate
2. Back
3. Barrel
4. Hinge Rivet
5. Manufacturers Identification
6. Product Code

### [B] Gate Mechanisms

- Screwgate - Unscrew, Open
- Twistlock (double-action) - Turn, Open
- Supersafe (Triple-action) - Lift, Turn, Open
- Quadlock (Quad-action) - Turn, Lift, Turn, Open

### [C] Use

1. The Anchor device, or structural member chosen to serve as the anchor point must be assessed for suitability, position, and, where possible, must have a minimum strength of 18kN
2. Karabiners are designed so that the the load is applied and as close as possible to the spine
3. Do not apply side loads to the karabiner gate unless specifically rated (ANSI Only)
4. Do not load the karabiner in multiple directions
5. Do not link karabiners together
6. Do not load karabiners over an edge
7. Any anchor rope or web strap used that is equal to or bigger than the gate opening could reduce the overall strength of the karabiner
8. When using a captive pin, the rope/ web strap should be captivated under the pin

### [D] Inspection & Maintenance

1. To inspect the gate mechanism, open the gate fully and release without bias.
2. Then test by opening the gate to halfway and release without bias The gate should fully close and self lock (except Screwgate). Assess the effectiveness of the return spring.
3. Moving parts should be lubricated regularly using light oil such as 3in1 or a dry PTFE lubricant solution
4. Karabiners fitted with an indicating eye should be inspected to ensure that the red indicator band is not showing. If the band is visible, then the karabiner has been subjected to a fall and should be removed from service

7. Minimum Breaking Strength across Major Axis in kN
8. CE Mark
9. Notified Body Number
10. European Standard
11. Read Instruction Manuals

Model	Mat.	MBS kN	Gate Opening <sub>mm</sub>	P / I	ANSI	NFPA	
KH204	BG	ALU	25	34	P	-	-
KH204	SG, TL, SS, SSQ	ALU	27	24	-	-	T
KH212	SG, TL, SS, SSQ	S	50	23	-	✓	G
KH214	TL, SS, SSQ	ALU	27	20	-	-	T
KH215	SG, TL, SS, SSQ	ALU	25	14	P	-	-
KH260	SG, TL, SS	S	40	22	I	✓	G
KH219	SG, TL, SS, SSQ	S, ST/S	70	25	-	✓	G
KH250	SG, TL, SS	ST/S	23	18	I	✓	T
KH255	SG, TL, SS, SSQ	ALU	27	16	I	-	-
KH300	SG, TL, SS, SSQ	ALU	30	20	-	-	-
KH301	SG, TL, SS, SSQ	S	50	19	-	✓	G
KH311	SG	S	25	17	-	-	-
KH307	SG, TL, SS	S, ST/S	40	42	P	✓	-
KH451	SG, TL, SS, SSQ	ALU	30	26	-	-	T
KH452	SG, TL, SS, SSQ	ALU	30	23	-	-	T
KH453	BG	ALU	25	17	-	-	-
KH453	SG, TL, SS, SSQ	ALU	25	17	-	-	T
KH455	SG, TL, SS, SSQ	S	50	28	-	✓	G
KH400	TL	S	45	57	P	✓	G
KH407	TL	S	35	54	P	✓	T
KL200	SG, TL, SS	S, ST/S	50	21	P	Y	G
KL202	SG, TL, SS	S, ST/S	50	27	P	✓	G
KL216	TL	ALU		22	P	-	-
KH218	SG, TL, SS	ALU	40	29	-	✓	G
KH220	SG, TL, SS	ALU	25	18	-	-	T
KL308	SG, TL, SS	S, ST/S	35, 30	17	P	✓	T
KL321	SG, TL, SS	S	40	17	-	✓	G
SH824	SNAPHOOK	S	27	-	-	-	-
SH826	SNAPHOOK	S	30	-	I	-	-
SH901	SNAPHOOK	ALU	27	-	-	-	-
SH903	SNAPHOOK	ALU	27	-	-	-	-
SH904	SNAPHOOK	ALU	27	-	I	-	-
SH905	SNAPHOOK	ALU	27	-	I	-	-
SH979	SNAPHOOK	ALU	27	-	-	-	-
SH999	SNAPHOOK	ALU	27	-	-	-	-

Symbol	Explanation
Alu	Aluminium
S	Steel
ST/S	Stainless Steel
P	Pinned version available
I	Indicator version available
G	NFPA 'General'
T	NFPA 'Technical'