



**H28/L - standard buckle, standard/large size**  
**H28Q/QL: quick connect, standard/large**  
**H28QE/QEL: quick connect, extended dorsal attachment point, standard/large**

The Neon is a full body harness. It is personal protective equipment for the prevention of falls from height.

H28QE is available with an extended dorsal attachment point and is only for use with fall arrest blocks.

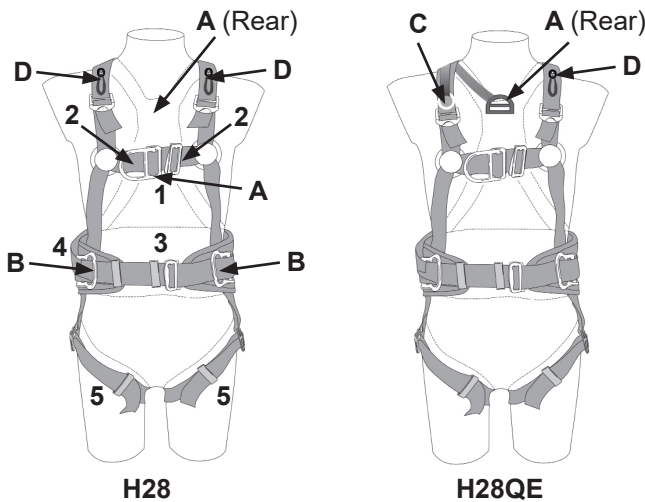
### Checking Your Harness

Step into harness, fasten and adjust in the order shown 1-5 in the diagram below.

Check fit whilst suspended in a safe location - the harness should feel secure but not too tight. Check for twisted straps. Check buckles are secure by pulling on loaded webbing - correctly threaded buckles will lock.

Fastening and adjustment elements should also be checked regularly during use.

To release quick connect buckles, press tabs on both sides of buckle simultaneously.



### Attachment Points

Use only the attachment point shown (A) in the diagram as the main attachment point for fall arrest. Points marked (B) are for attachment of a work positioning lanyard (pole belt) to EN358. NEVER use a single side D-ring as an attachment point.

### MAKE SURE YOU USE THE CORRECT ATTACHMENT POINT FOR THE CORRECT PURPOSE

**WARNING - H28QE/QEL** is fitted with an S25N lanyard extension to dorsal attachment point (C). This must ONLY be used for attachment of retractable fall arresters. Under no circumstances use this extended attachment point in conjunction with an energy absorbing lanyard.

### Warnings

Do not use this product for any purpose other than recommended above. Do not alter or make additions to this product.

Only a full body harness is appropriate for use in fall arrest applications, a sit harness is not suitable.

When using a work positioning system and/or using your equipment for support, it is essential to use an additional back-up. e.g. fall arrest system. When using the side D rings for work positioning, it is essential to use anchor points at or above waist level.

When work positioning the waist belt is approved for a user (including tools and equipment) with a mass of up to 150kg.

When in fall arrest ensure all equipment is suitable for the total mass of user and tools and equipment.

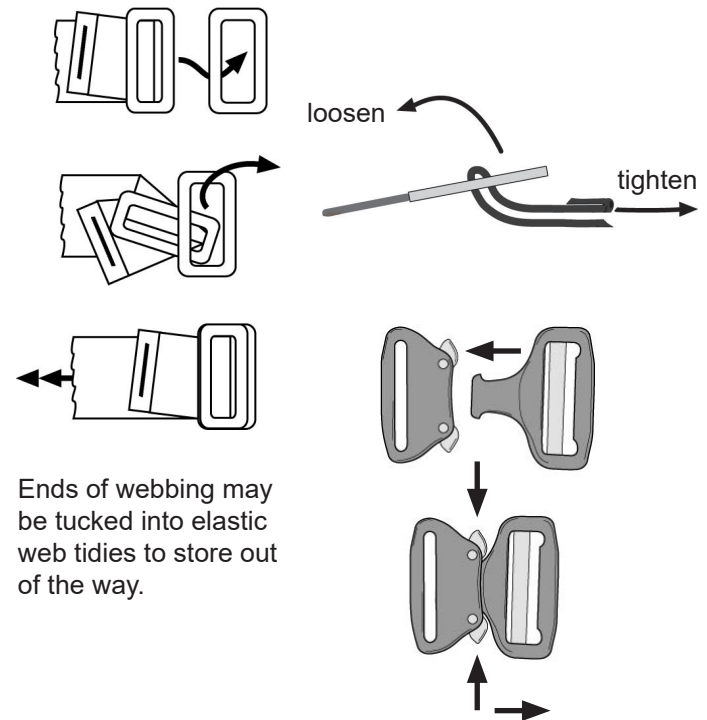
The waist belt is not suitable for fall arrest and should not be used if there is a foreseeable risk of user becoming suspended or exposed to unintended tension by the waist belt.

Ropes and rope lanyards may be tied directly to attachment points; otherwise, ensure that suitable locking connectors are used and correctly fastened. A screwlink connector is recommended. Check that connectors are securely closed during use. Incorrect combinations of connectors may accidentally detach from each other by a process known as "roll-out".

The harness should be connected to an anchor point via an appropriate system which ideally should conform to the relevant EN standard. In work positioning the lanyard must be kept taut and free movement restricted.

The webbing loop on each shoulder (D) can be used to stow lanyard legs. Setting 1 ● (recommended) will release at around 25kg, setting 2 ●● at around 60kg.

### Fastening & Adjustment



Ends of webbing may be tucked into elastic web ties to store out of the way.

Harnesses are made from polyamide and polyester, with steel and aluminium alloy fittings.

Waist belt size:

Standard - 75cm to 160cm

Large - 95cm to 160cm

