

Guardrail Gate

Part #	Size	Description
15105	18"	Guardrail Gate
15110	24"	Guardrail Gate
15111	36"	Guardrail Gate
15112	27"	Guardrail Gate

Compliant with all OSHA 1910 and 1926 Subpart M regulations.

Custom configurations not available. Not repairable.
Contact customer service for more information.

Guardrail Gate is suitable for the following applications:



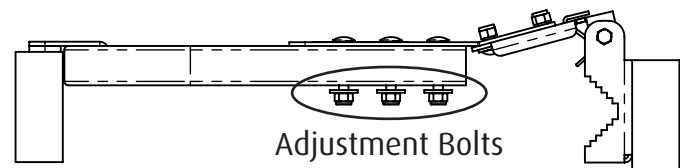
Guardrail Gate Systems may be used in Fall Prevention applications ONLY. Fall Prevention Systems are placed around the leading edges of any and all fall hazards to prevent a worker from going over an edge, and may be used in substitute of Fall Protection or safety netting systems. Installation requirements for Guardrail Gate Systems set forth in equipment instructions MUST be adhered to. Personal Fall Arrest, Work Positioning, Climbing, Rescue, and any other systems must NEVER be connected to Fall Prevention Systems.



Materials: powder-coated steel.

Maximum rail diameter: 2".

Can adjust to fit different widths.



Contact Guardian Fall Protection for individual model UPC codes.

Box Dimensions:

18" L x 18" W x 3" H (15105), 24" L x 18" W x 3" H (15110),

36" L x 18" W x 3" H (15111), 27" L x 18" W x 3" H (15112).

Weight: 20 lbs. (15105); 25 lbs. (15110 & 15112); 30 lbs. (15111).

Quantity: 1 unit per box.