

SEAT TEC

EN Adjustable positioning seat.
 IT Sedile di posizionamento regolabile.
 FR Sellette de positionnement réglable.
 DE Einstellbarer Positionierungssitz.
 ES Asiento de posicionamiento regulable.
 PT Banco de posicionamento regulável.
 NO Regulerbart sete for hengende arbeid.
 SI Nastavljiv sedež.
 CZ Nastavitelná polohovací sedačka.
 CN 可调节定位座板。

**NOT A PPE
 MADE IN EUROPE**

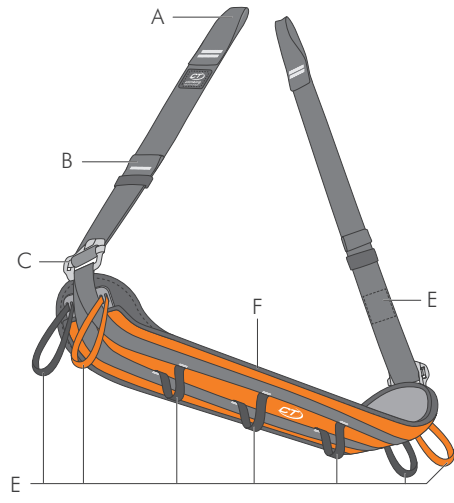


IST52-7H158CT_rev.2 07-18

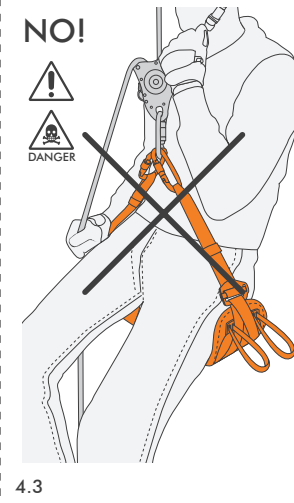
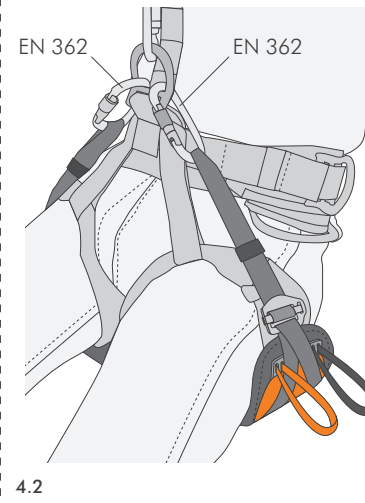


by Aludesign S.p.A. via Torchio 22
 I 24034 Cisano B.sco BG ITALY
 Central tel: +39 035 78 35 95
 Central fax: +39 035 78 23 39
 www.climbingtechnology.com

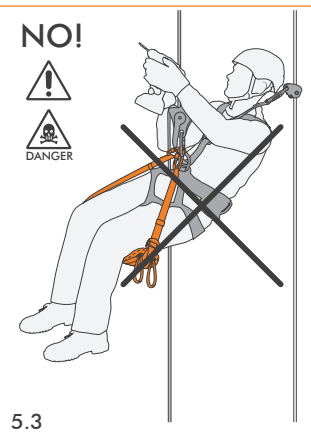
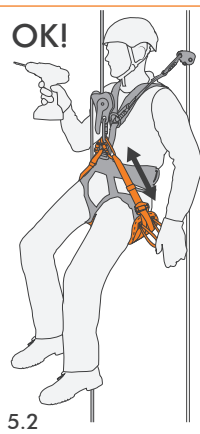
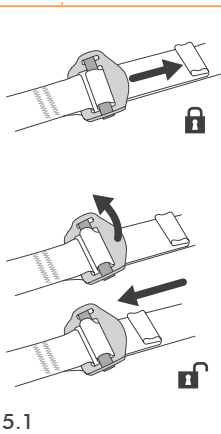
3 NOMENCLATURE OF PARTS



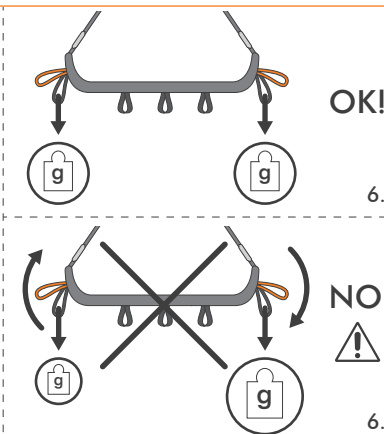
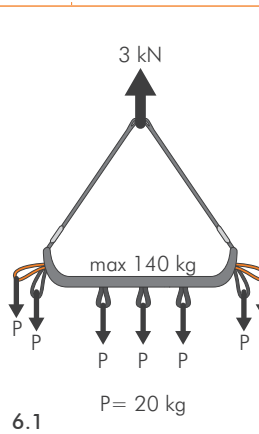
4 INSTALLATION



5 ADJUSTMENT BUCKLES



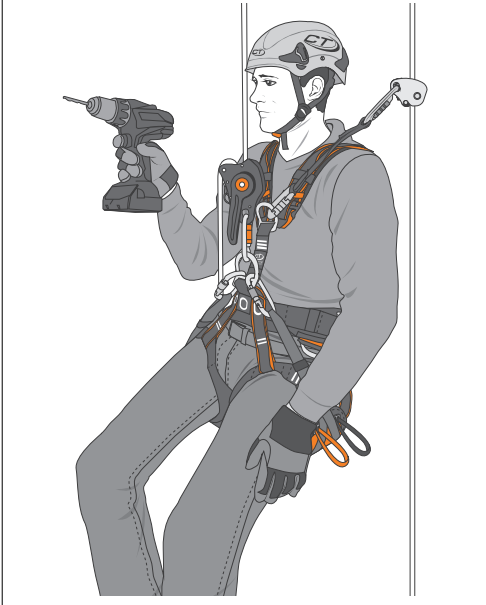
6 GEAR LOOPS



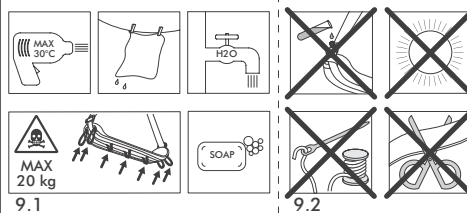
7 POSITIONING FOR WALKING



8 EXAMPLE OF USE



9 WARNINGS



C TRACEABILITY

individual serial number
AAAA - MM - YYYY
 progressive number month of manufacture year of manufacture

ENGLISH

The instruction manual for this device consists of general and specific instructions, both must be carefully read and understood before use. **Attention!** This leaflet shows the specific instructions only.

SPECIFIC INSTRUCTIONS SEAT TEC. This document contains the necessary information to correctly use the suspension seat Seat Tec.

0) FIELD OF APPLICATION. This product is not personal protective equipment (PPE). It provides a comfortable and stable working position during suspension and it must be used exclusively with a full-body harness equipped with a EN 813 attachment point.

1) NOMENCLATURE (Fig. 3). A) Loop for connector. B) Adjustment strap. C) Adjustment buckle. D) Gear loops. E) Label. F) Seat.

2) MARKING (Fig. 2). The following information is indicated on the label: 1) Name of the manufacturer or of the responsible for the introduction in the market; 2) Product name; 3) Serial number; 4) Reference number; 5) Size; 6) Statement warning that the product is not PPE.; 7) Pictogram showing how to use the adjustment buckles; 8) Logo advising the user to carefully read the instruction manual before employing the device; 9) Place of manufacturing; 10) Gear-loop maximum load.

3) TRACEABILITY (Fig. C). The device includes an individual serial number (AAAA-MM-YY) composed by progressive number (AAAA), month (MM) and year of manufacture (YYYY).

4) INSPECTION. Before each use verify that: webbing and stitching do not show cuts, wear points, abrasions, burns or signs corrosion; metal parts (for example buckles, points of attachment) do not show visible signs of corrosion, abrasion or deformations; watch out for dirt, (ex. sand or mud). Before performing work at heights: it is mandatory to prearrange a rescue plan to give immediate assistance to the operator in difficulty; inform the operator about the rescue plan. During each use regularly verify: the good working conditions of the device comprising the correct placing of the other components included in the system; that the connectors are properly locked and the safety catch is closed. **Attention!** It is important to check regularly the buckles and/or the adjustment devices during the use.

5) INSTRUCTIONS FOR USE. The device has been designed to be used in weather conditions that can normally be withstood by humans (operating temperature range between -20°C and +60°C). All the materials and treatments are hypoallergenic and do not cause skin irritation or sensitivity.

5.1 - Installation. The suspension seat must be secured to the EN 813 attachment point of the harness by using two EN 362 connectors inserted in the designated loops. **Attention!** Make sure that the harness in use has been adjusted correctly and that it is secured to both the work rope and the safety rope.

5.2 - Adjustment. The adjustment buckles must be used in order for the user to find and maintain a stable and comfortable position.

5.3 - Gear loops. Gear loops are to be used only to hang materials. Do not use for other purposes (protection, descent etc.). Take care to balance the load on the seat (Fig. 6.2+6.3). **Attention!** The bottom gear loop can be used to secure the seat to the back of the harness and to carry it when it is not in use.

1 TECHNICAL DATA

REF. No.	7H158AF01
SIZE	UNIVERSAL
WEIGHT	1150 g

2 MARKING

