

TELEFIX

User Manual

TELEFIX

Anchor equipment with telescopic rod

Subject to technical changes

BRIEF DESCRIPTION

INTENDED USE

The attachment device TELEFIX is part of personal protective equipment (PPE) of category III to prevent falls from heights. The TELEFIX can be used to create a secure attachment point to attach a securing system at a safe distance, e.g. on sloping roofs with overhangs at a safe distance. The telescopic rod allows simple handling and can be packed into a compact size. The trolley allows easy operation, even over greater distances.

If the TELEFIX is used as an attachment point for an arresting system, the user must use a full body harness in compliance with EN 361 and a system that limits the fall impact to 6 kN (e.g. an energy absorber according to EN 355 or a guided type fall arrester in compliance with EN 353-2).

The system is suitable for dynamic force application of up to 9 kN and a static force application of up to 13 kN during which the D-ring is subject to a load toward the telescopic rod. The TELEFIX does not swing out here (< 10 mm). Here, the attachment point is loaded with a downward vertical load up to horizontal to the side.

Steps must be taken to rule out any position changes by the user that could cause bending or shearing stress on the TELEFIX hook.

The TELEFIX may only be used to secure persons and may not be used to transport loads.

Maximum number of users: 2 persons

All other uses are deemed improper. The company BORNACK will not be liable for any ensuing damages. The user bears the sole risk.

BRIEF DESCRIPTION

EQUIPMENT

- Hooks made of aluminium and plastic in a sandwich design, also for roof overhangs of up to 76 mm diameter with an angle of 45° and 89 mm diameter with an angle of 35°.
- Stainless steel D-ring.
- Stainless steel trolley with detachable plastic wheels.
- Telescopic rod 6-part 1.95–9.10 m made of glass fibre-reinforced plastic, insulated for a rated voltage of 110 kV.
- Operating cord made of polyamide.

ACCESSORIES

- Securing system, e.g. FALLSTOP® BK

EINSATZ

- Attachment

INFORMATION BEFORE USE



Always check before use!

- The user must have completely read and understood the User Manual before use.
- The personal protective equipment (PPE) may no longer be used even in the case of very minor faults. Faulty PPE components may only be tested or repaired by BORNACK or in a workshop authorised in writing by BORNACK.
- Regular inspections are essential because the safety of the user depends on the efficiency and durability of the PPE.
- The personal protective equipment may only be used by qualified staff that are familiar with the material. They must be proficient in handling the personal protective equipment and must have been briefed about the possible risks associated with its use.
- The operating cord does not serve for fall protection.
- The TELEFIX should be removed from the attachment point every time after use.

VISUAL INSPECTION

- Metal and plastic parts undamaged. Hooks and snappers show no signs of deformation.
- Operating cord undamaged.
- No damage to trolley.
- No damage to the telescopic rod.
- Locking bolts are in place and undamaged.
- The last inspection by an expert was carried out within the past 12 months.

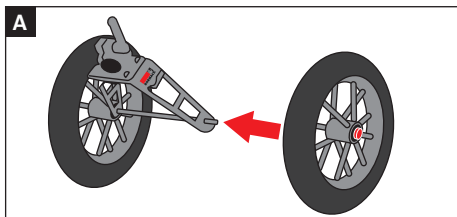
FUNCTION TEST

- Wheels run smoothly.
- Snapper closes automatically when the operating cord is released.
- The quick-release device of the trolley can be closed and opened.
- The quick release levers of the telescopic rod can be opened and closed.

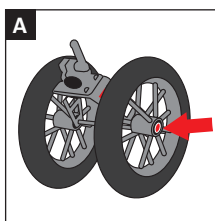
TELEFIX IN USE

PREPARATION

A Open the wheel lock by pressing the push-button briefly and then releasing it. Insert the wheels onto the axles of the trolley. Close the wheel lock again by pressing the push-button.



B Open the quick-release device of the trolley and attach the trolley behind the marking line on the telescopic rod. Close the quick-release device.

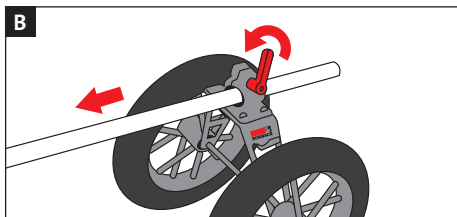


CAUTION:



Ensure that the wheels and trolley are positioned and locked correctly.

C Insert the hook into the telescopic rod and secure with the locking bolt. Locking bolts need to be pushed through until the pawls are visible again.

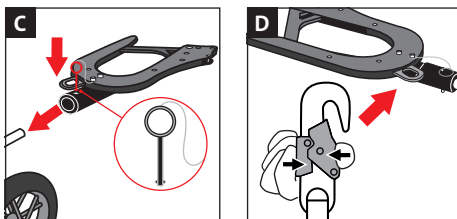


CAUTION:



Check that the locking balls of the locking bolt prevent unintentional removal of the locking bolt.

D Hook the securing system (e.g. FALLSTOP® BK) into the D-ring of the TELEFIX attachment device.



CAUTION THREAT TO LIFE:



At this time, the securing system now hooked to the TELEFIX may not yet be attached to the full body harness, otherwise there is a risk of falling!

Observe the User Manual of the securing system.



TELEFIX IN USE

APPLICATION OPTIONS

E Pull out the telescopic pole to the required length.

CAUTION THREAT TO LIFE:

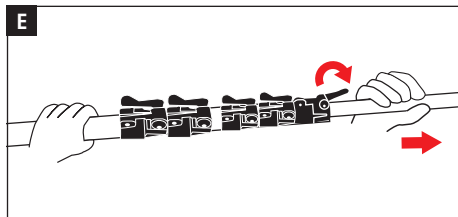


Assume a safe stance when pulling out the telescopic rod!

CAUTION THREAT TO LIFE:



Cordon off enough fall space below the work area to protect passersby against falling objects.

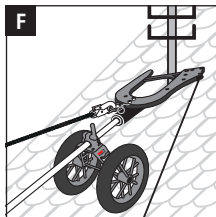


F Place the trolley onto e.g. the roof. Using the wheels, push the TELEFIX hook toward the attachment point (e.g. roof overhang, beams etc.).

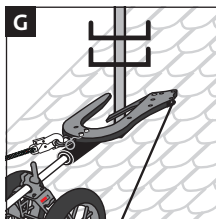
CAUTION THREAT TO LIFE:



Select suitable attachment point. Min. 9.0 kN and/or acc. to EN 795! When selecting the attachment point, minimise the fall height and/or the free fall!

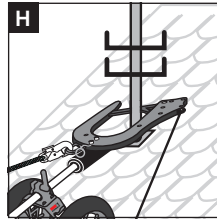


G Push the snapper of the TELEFIX hook against the attachment point. This then opens inwards and the attachment point can be driven over.



TELEFIX IN USE

H As soon as the snapper has closed again automatically, pull the trolley back slightly so that the TELEFIX hook sits snugly.



Check:

Is the snapper closed?

Was the trolley pulled downwards a bit so that the TELEFIX hook sits tight?

Carry out a functional test by pulling the securing system downwards.

CAUTION THREAT TO LIFE:



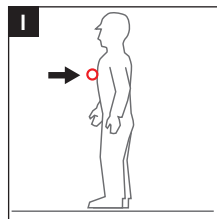
The securing system connected to the TELEFIX may only be attached to the user's full body harness **after** the TELEFIX has been securely attached to a suitable attachment point. Otherwise there is a risk of falling!

I Hook the securing system into the D-ring of the full body harness.

CAUTION THREAT TO LIFE:



Carry out a functional test before crossing into the securing system!



Observe the User Manual of the strap and the securing system.



TELEFIX IN USE

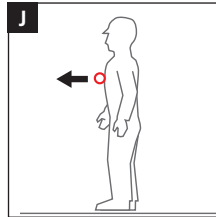
DISMANTLING

CAUTION THREAT TO LIFE:



Before dismantling the TELEFIX, users must secure themselves somewhere else or be in a safe work position!

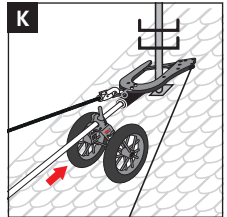
J Release the user's securing system hooked into the TELEFIX.



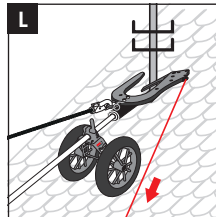
CAUTION THREAT TO LIFE:



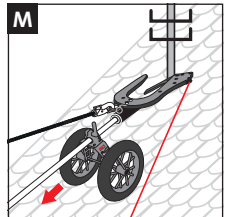
The TELEFIX may only be released from the attachment point after the user has disengaged from the securing system hooked into the TELEFIX. Otherwise there is a risk of falling!



K Relieve TELEFIX by pushing.



L Pull on the operating cord to open the TELEFIX.



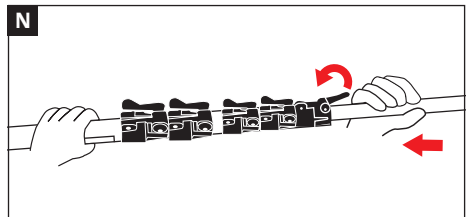
M Pull the TELEFIX down and draw near with the telescopic rod.

N To do this, open the quick release lever slowly and retract the extended telescopic element by element.

CAUTION THREAT TO LIFE:



Ensure a safe stance when retracting the telescopic rod!



O The steps A–D on page 6 should be carried out in reverse order for transportation.

SAFETY INSTRUCTIONS

There is a risk to life if these safety instructions are not observed!

- The personal protective equipment (PPE) may no longer be used even in the case of very minor faults.
- Damaged, fall-stressed, dubious personal protective equipment or safety devices must be immediately withdrawn and not used. The equipment may only be inspected by an expert in compliance with DGUV principle 312-906 and/or a workshop authorised in writing by BORNACK. This must be documented in the test card.
- Independent modifications or repairs are not allowed.
- Rope protection is part of the personal fall prevention equipment and should be assigned to a specific person.
- The personal protective equipment may only be used by qualified staff that are familiar with the material. They must be proficient in handling the personal protective equipment and must have been briefed about the possible risks associated with its use.
- In accordance with the accident prevention guidelines (UVV), the users of fall protective equipment (Category III) must attend a theoretical training course and a practical training course. To this end, make use of the training competence of the BORNACK training centres: info@bornack.de.
- Accessories from other manufacturers may only be used if approved by BORNACK and may not impair the function and safety of the protective equipment.
- Clothing and shoes must be suitable for the task at hand and the weather conditions.
- Only use if fully fit and healthy.
- Health impairments can jeopardise the safety of the user when working at heights or depths.
- If this PPE is used as an arrester system (free fall is possible), only full body harnesses that comply with EN 361 may be used.
- Calculation of the possible fall path if all necessary PPE components are used correctly: (if necessary braking path HSG) + surplus lanyard (situation-dependent) + braking path energy absorber (max. 1.75 m) + height of D-ring (1.5 m) + safety reserve 1.0 m.
- Before using, ensure adequate clearance below the user to prevent impact on a protruding object or the ground.
- Protect personal protective equipment during storing, use and transportation against the effects of heat (e.g. welding flames or sparks, burning cigarettes) and chemicals (e.g. acids, alkalis, oils) and mechanical impact (e.g. sharp edges).
- The combinability and protective effect of the PPE must be checked for each hazard situation (risk assessment).
- Before starting work, the responsible person must draw up a plan of rescue measures that defines how to rescue casualties quickly and safely and ensures first aid measures. Casualties must be rescued within 20 minutes. BORNACK can help you draw up tailor-made rescue plans and includes these in the necessary training courses. E-Mail-Hotline: info@bornack.de
- The local safety guidelines (e.g. in Germany, the DGUV Regulations 112-198 and 112-199 issued by the professional associations) and the accident prevention guidelines for the specific industry (UVV) must be observed.

OTHER

APPROVAL

Complies with the EC Directive 2016/425 for PPE.

Type testing and production monitoring by:

DEKRA EXAM GmbH
Dinnendahlstr. 9, D-44809 Bochum
CE 0158

Quality management system certified to DIN EN ISO 9001:2015.

Production monitoring by notified office in accordance with Category III.

REGULAR INSPECTIONS

- This personal protective equipment must be inspected at least once a year by an expert in compliance with DGUV Principle 312-906. The result must be documented in the test card at the end of this User Manual.
- The TELEFIX should be marked with the date of the next expert test.

SALES

- The dealer must ensure that the User Manual is supplied in the language of the designated country. The respective translation must be authorised by BORNACK.

SERVICE

If you have any further questions about this PPE or other BORNACK services, such as:

- Risk analysis
- Rescue plans
- Training courses
- Expert inspections
- Technical inspections
- Maintenance + inspections

please send your question to our e-mail hotline:
info@bornack.de

We will be happy to help!

MAINTENANCE

- If necessary, apply a small amount of oil on the joints so that the moving parts of the karabiner and other devices run smoothly. If possible, use precision mechanics oil.
- Maintenance may only be carried out by a qualified expert in compliance with DGUV Principle 312-906. All instructions in this User Manual must be strictly observed.
- Protective equipment that is clean and well looked after will last longer!

CLEANING

- Dry damp personal protective equipment in the air, not on artificial heat sources. Dry metal components with cloths.
- Clean soiled textile components (cord) with lukewarm water and a little detergents for delicates. Then rinse carefully and allow to dry in the air. Other cleaning agents are not allowed!

OTHER

- If disinfection is necessary, please contact the e-mail hotline: Contact hotline: info@bornack.de
- If the personal protective equipment comes into contact with saltwater, keep it wet until it can be rinsed with plenty of distilled water.
- Use compressed air to blow on the unit if necessary.

LIFE SPAN

The expert makes a decision about whether the time has come to withdraw a TELEFIX or its components based on his technical expertise.

The life span of the TELEFIX is not defined by years, but by the usage frequency and how it is stored.

The edges of the red plastic core of the TELEFIX hook may fade over time as the result of exposure to various weather conditions, e.g. UV radiation. This is a normal process. The TELEFIX hook must be withdrawn from use at the latest when the plastic core is visibly porous and a significant loss of strength is recognisable. The expert makes a decision about these parts based on his technical expertise.

For reasons of safety, intensive use and/or extreme application conditions such as sharp edges, chemical influences etc. will reduce the usage period. The company owner needs to ensure this in the workplace risk analysis.

The test card at the end of this User Manual must be presented during the regular expert inspections and be completed by an expert.

For more details, please visit is available online at www.bornack.de

REPAIRS

- For reasons of liability, repairs may only be carried out by the manufacturer.
- Only original spare parts from the manufacturer may be used.

STORAGE

- Dry damp PPE **before** storage.
- Store in a dry place away from direct sunlight.
- Do not store PPE near radiators. Permanent exposure to temperatures below 0 °C or above +50 °C has a negative impact on the strength of the materials and shortens the life span.
- Do not allow PPE to come into contact with aggressive substances (e.g. oils, grease, acids, chemicals).
- Do not store personal protective equipment close to aggressive substances (see above) because even the vapours of aggressive substances can have a negative effect on the strength of the PPE.
- Ensure protected storage.

TRANSPORT

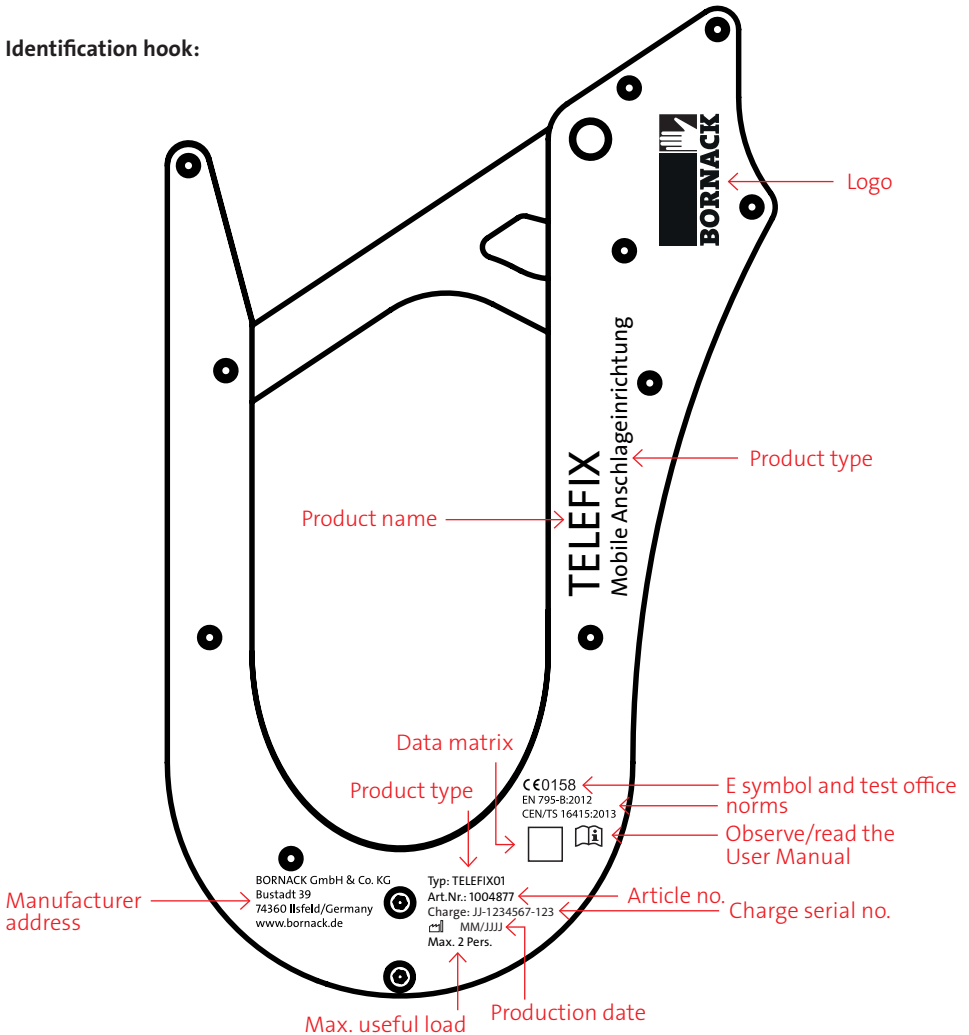
- Ensure protected transport.

OTHER

PRODUCT IDENTIFICATION

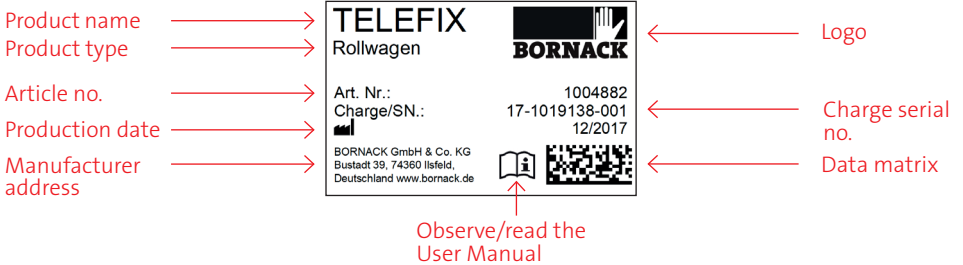
The following identification is on the product:

Identification hook:

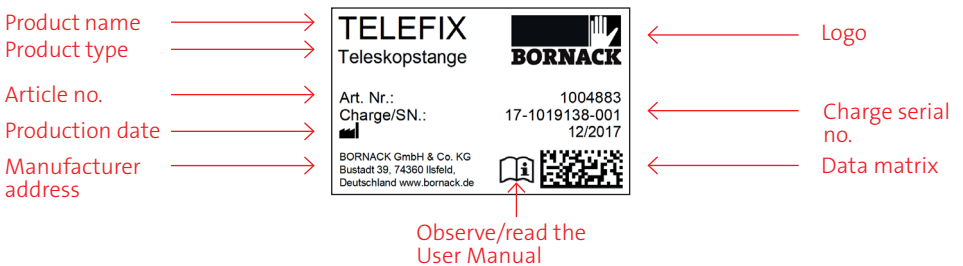


OTHER

Identification trolley:



Identification telescopic rod:



TEST CARD

FOR ANNUAL MONITORING

The test list must be completed in full by the expert during the annual inspection.

This test list does not claim to cover all test criteria and does not relieve the expert from his decision about the overall condition.

Type: TELEFIX01 Product type: Hook

Production date: _____

Charge serial no.: _____

Purchase date: _____

Date of first use: _____

Life span ends at the latest: /

	Date	Signature	Next Inspection	Reason for inspection
1. year				
2. year				
3. year				
4. year				
5. year				
6. year				
7. year				
8. year				
9. year				
10. year				



TEST CARD

FOR ANNUAL MONITORING

The test list must be completed in full by the expert during the annual inspection.

This test list does not claim to cover all test criteria and does not relieve the expert from his decision about the overall condition.

Type: TELEFIX01 Product type: Telescopic rod

Production date: _____

Charge serial no.: _____

Purchase date: _____

Date of first use: _____

Life span ends at the latest: /

	Date	Signature	Next Inspection	Reason for inspection
1. year				
2. year				
3. year				
4. year				
5. year				
6. year				
7. year				
8. year				
9. year				
10. year				



TEST CARD

FOR ANNUAL MONITORING

The test list must be completed in full by the expert during the annual inspection.

This test list does not claim to cover all test criteria and does not relieve the expert from his decision about the overall condition.

Type: TELEFIX01 Product type: TTrolley

Production date: _____

Charge serial no.: _____

Purchase date: _____

Date of first use: _____

Life span ends at the latest: /

	Date	Signature	Next Inspection	Reason for inspection
1. year				
2. year				
3. year				
4. year				
5. year				
6. year				
7. year				
8. year				
9. year				
10. year				

EU DECLARATION OF CONFORMITY



EU Declaration of Conformity

The manufacturer or his authorised representative established within the EU

BORNACK GmbH & Co. KG
Bustadt 39
74360 Ilsfeld
Germany

hereby declares that the following personal protective equipment

Anchor device type B
TELEFIX

- is in conformity with the relevant harmonisation legislation according to Annex V (Module B) of the Regulation (EU) 2016/425 on personal protective equipment according to Article 19 (category III PPE) and is examined to EN 795:2012 CEN/TS 16415:2013

- is identical to the PPE that is the object of the EU type-examination certificate No. ZP/B180/17

issued by

DEKRA Testing and Certification GmbH
Dinnendahlstraße 9
44809 Bochum
Germany
CE 0158

- is subject to the assessment of conformity to type, based on internal production control plus supervised product checks according to Module C2 of the Regulation (EU) 2016/425 for personal protective equipment (category III PPE), monitored by the notified body

DEKRA Testing and Certification GmbH
Dinnendahlstraße 9
44809 Bochum
Germany
CE 0158

28 June 2019

BORNACK GmbH & Co. KG

Klaus Bornack
Managing Director





FALLSTOP

Safety equipment for securing and rescuing at heights and depths

SAFEPOINT

Permanently installed safety systems for architects and industry

BORNACK GmbH & Co. KG

Bustadt 39
74360 Ilsfeld
Germany

Tel + 49 (0) 70 62 / 26 90 0-0
Fax + 49 (0) 70 62 / 26 90 0-550
info@bornack.de
www.bornack.de

BORNACK Schweiz
Untere Brühlstr. 11
4800 Zofingen, AG
Switzerland

Tel + 41 (0) 62 / 886 30 40
info@bornack.ch
www.bornack.ch